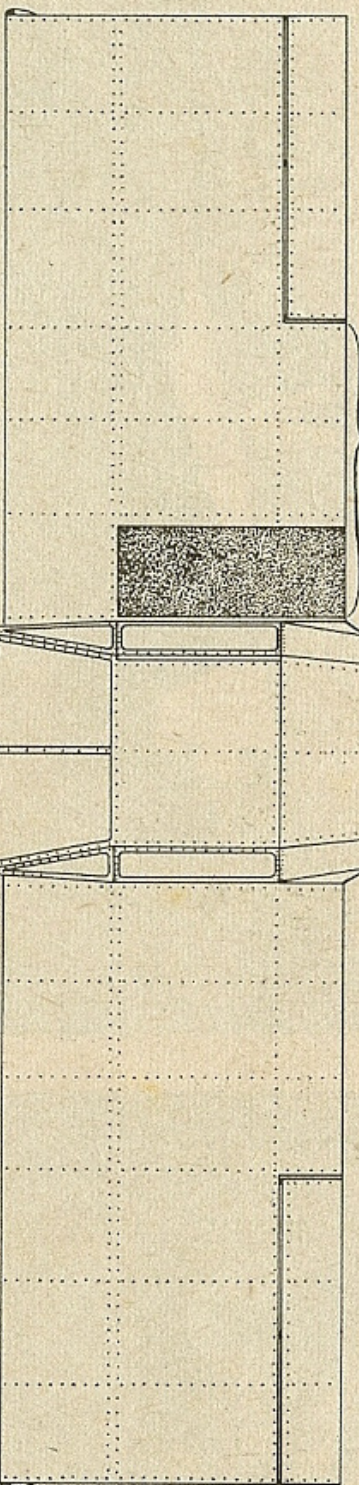


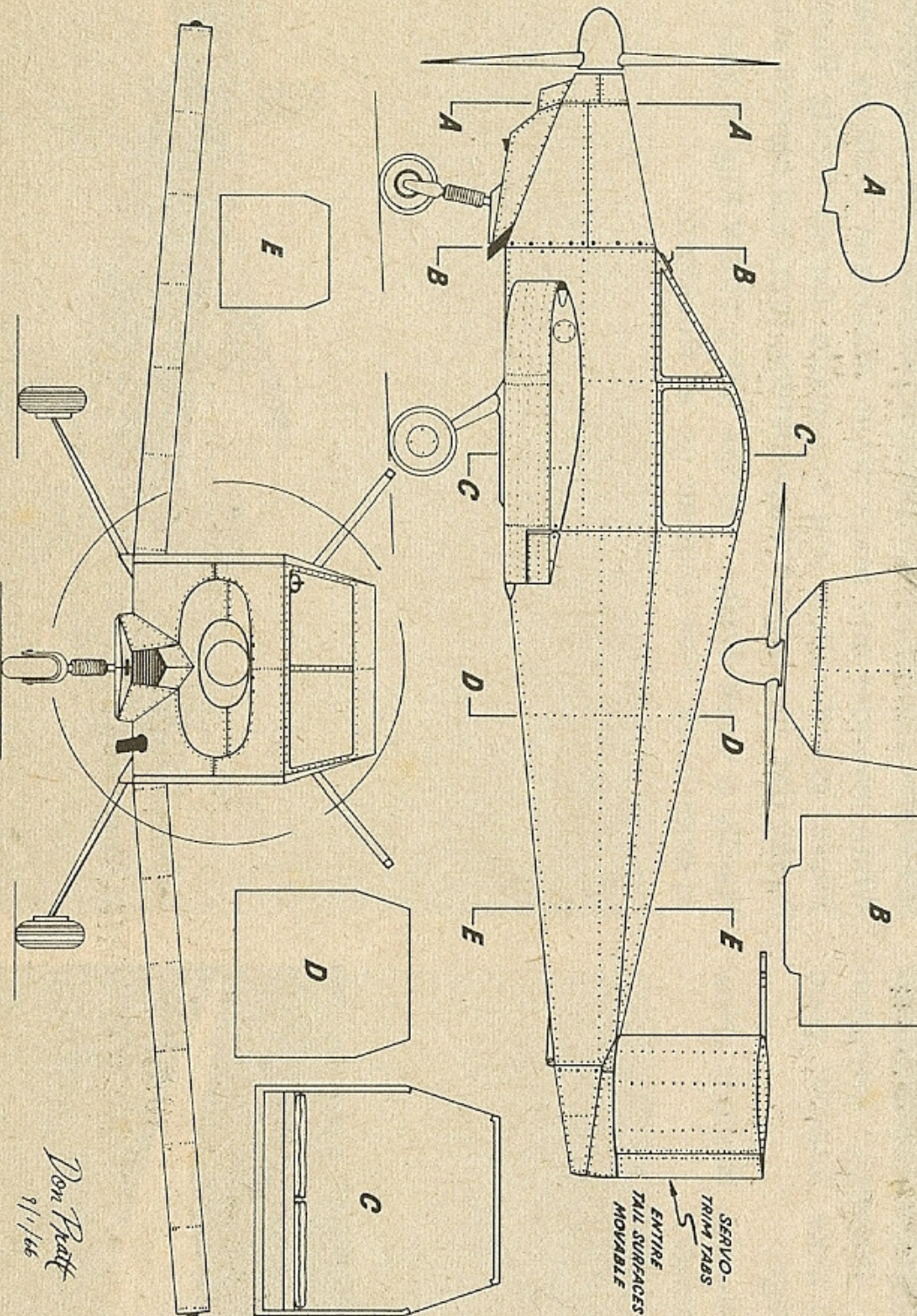
# Davis DA-2A

Built by  
**LEON DAVIS**  
Norman, Oklahoma



Engine . . . . . Continental 65 h.p.  
Top speed . . . . . 140 mph.  
Cruise speed . . . . . 110-115 mph.  
Empty weight . . . . . 600 lbs.  
Gross weight . . . . . 1125 lbs.

**Construction:**  
Simplified all-metal. Basically flat-bent, 2024 sheet aluminum with no compound curves. Reinforced with tube and sheet steel fittings.



Don Pratt  
9/11/66